

Gate City Charter School

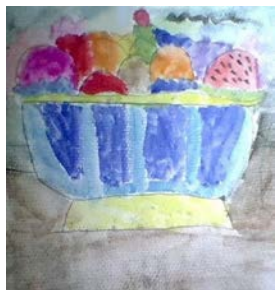
November News

WZID's Teacher of the Month

We are so proud to announce that our very own Julia Waterman won November's Teacher of the Month for WZID. We'd like to thank Ashleigh Martin for nominating Julia for this outstanding award. Mrs. Waterman has been with Gate City Charter School since its opening. She started as the school's Kindergarten teacher and was able to move up with her class the following year and has remained our 1st grade teacher for the following 6 years. When asked if she would move up with her class again this year due to remote learning, Julia stated that she will do what is in the best interest of her students. She continuously adapts to new challenges and always strives to provide the best education to all of her students. We are so incredibly lucky to have Mrs. Waterman in our school community!



Aria Ward



Rowan King



Halle Ditson

OCTOBER'S ARTISTS OF THE MONTH



Mira Flis



Fiona Bemis



November 9th- 13th:
Gate City Kindness Week

November 11th:
Veterans Day- NO School

November 13th: Wear Green for World Kindness Day

November 19th:
School Picture Day

November 25th-27th:
Thanksgiving Break- NO SCHOOL

December 1st: End of Trimester 1

1

**NO SCHOOL
WEDNESDAY
NOVEMBER 11TH,
2020**

2

**CHECK YOUR EMAIL
FROM O'CONNOR
STUDIOS FOR
SCHOOL PICTURES!**

3

**MAKE SURE YOU
WEAR GREEN FOR
WORLD KINDNESS
DAY!**



**Nicholas
Efsthathiou**



Paige Michaud



**Chelsea
Henderson**



Aaliyah Tardiff

Facility Re-Opening Proposed Updates

PENDING Board approval, the Taskforce will propose to further develop a hybrid model which will encompass one day for grades to attend with 100% of their class on site.

For example, Kindergarten and 1st grade attend school at Gate City on Monday; 2nd grade and 3rd grade attend on Tuesday; Wednesday would remain remote; 4th grade and 5th grade attend on Thursday; Middle School grades attend on Friday.

This would allow our teachers to utilize a synchronous model of learning and students would be with all of their peers that chose to access hybrid education. FULL REMOTE will continue to be an option for all students.

November's Artist of the Month

Bridget Riley

ART FORM: POP ART
INTERESTING FACTS

1. Riley's art has been known to actually give viewers motion sickness. The ripples on the paintings cause the illusion that the whole world is moving.
2. Her paintings have increased in value over 25,000% in 25 years. Riley's paintings are one of the top ten most expensive works of living artists in the world..
3. She has several homes and storage spaces and art studios. She says that she doesn't like to live near her own art. So she is always moving.
4. She can't stand seeing reproductions of her art, especially as patterns on t-shirts and clothing.
5. She was so popular in the 1960s that her show sold out before it opened and all of the paintings were sold.

Nashua Downtown Scarecrow Contest



Thank you to everyone who participated by voting or taking a selfie in Nashua's Downtown Scarecrow Competition!

Our 1st annual Boo Through!

A huge thank you to our PTO for hosting our first Boo Through. Gate City prides themselves on our community and while we have had to think outside the box to continue our community feel, we have been fortunate enough to have many members making these events come alive. It was a major success with so many creative and innovative trunks. Thank you to all those who participated and came to the event!



Gate City Charter School for the Arts

KINDNESS MATTERS



NOVEMBER 9th-20th FOOD DRIVE (extended an extra week)

Donations can be left in the school lobby from 8:30-3pm. If you come after hours, please drop your donations on the picnic tables at the rear of the school under the awning.

*We will need non-perishable items such as: Macaroni & Cheese, Ramen Noodles (No cups), Juice, Peanut Butter, Crackers, Tuna, Cereal, Canned Fruit, Canned Vegetables, Baked Beans, Canned Pasta, Soup, Instant Potatoes, Rice, Stuffing, Pasta (No Lasagna or large shells), Prepared Spaghetti Sauce, Pudding & Jell-O, Chips, Pretzels, Popcorn, Cake & Brownie Mixes, Cookies, canned green beans, canned cream of mushroom soup, canned yams, cranberry sauce, stuffing mix, miniature marshmallows, broth, rice. Additional items: paper towels, toilet paper, tissues.

BY NOVEMBER 13th CARDS FOR THE ELDERLY

We are inviting the students to make cards to share with the Ledgewood nursing home in Millford. These can also be dropped off in the school lobby

NOVEMBER 13th WORLD KINDNESS DAY

On November 13th let's all wear the color **GREEN** in support of World Kindness Day

